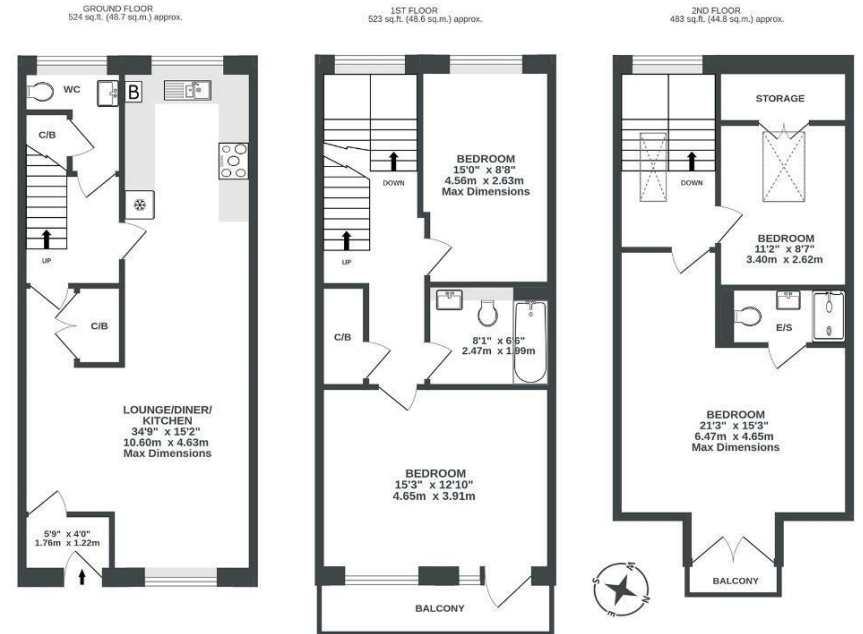


Boardwalk

Packers Way , BRISTOL

Packers Way GREENBANK

APPROXIMATE FLOOR AREA
142.1 SQM / 1529 SQFT



Illustrations are for reference purposes only, measurements are approximate, not to scale.

Boardwalk

Packers Way , BRISTOL



£620,000



BS5 6FP



4 Bedrooms



2 Bathrooms

“Our house is calm, bright and feels good to be in. We love our early walk along the cycle path to the gym, then being home again with hot coffee, ready to start the day.”

